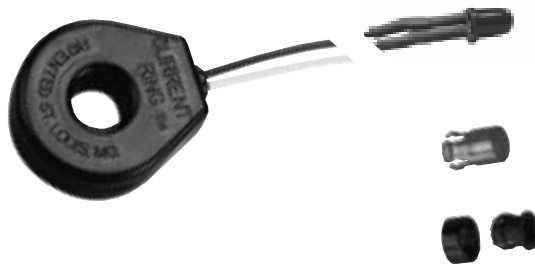




# Remote Current Indicator with preset turn-on point

The **CR2530** series Remote Current Indicators are as a low cost method for providing a visual indication of electrical current flow. The indicators are factory calibrated to provide a preset turn-on point. The value of the turn-on point is determined by the customer and specified in the part number. Attached to the transformer is a high efficiency, bipolar LED that illuminates when the current is above the turn-on point. The indicator is available as standard with an 11 inch long lead and a red or green LED indicator.



## Features

- Low cost for high volume OEM installations
- Preset turn-on point
- Fully isolated
- Easy to install
- Self-powered

## Specifications

**Turn-on point:** Factory calibrated

**Frequency:**

50 to 400 HZ

**Operating Temperature:**

-30 °C to +60 °C

**Storage Temperature:**

-55 °C to +85 °C

**LED Indicator type:**

T-1<sup>3</sup>/<sub>4</sub>, Bipolar, Red/Red or Green/Green Diffused, Indicator is supplied with LED attached to current sensing transformer

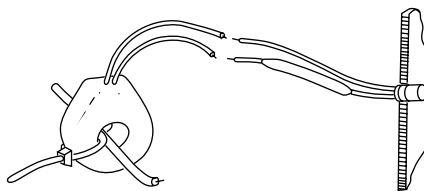
**LED Mounting Hardware:**

Supplied with both one-piece press-in lens and two-piece mounting clip

## Applications

- Indicate open heater element
- Observe remote loads
- Indicate phase loss
- Monitor motor overloads

## Typical Installation



## Part Numbers

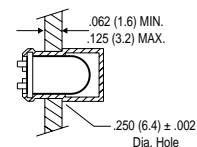
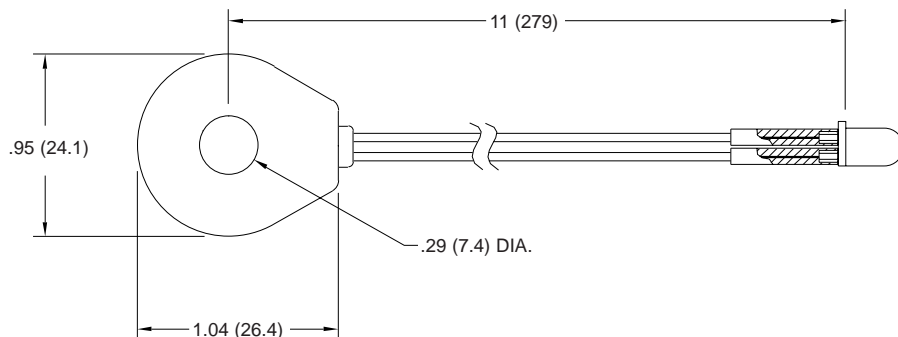
CR2530 - 11 - □□□ - □ CURRENT INDICATOR WITH PRESET TURN-ON POINT

R-Red Indicator  
G-Green Indicator

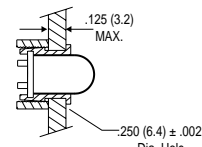
Turn-on point: 2.0, 5.0, 10, 20, 25 & 30 Aac are standard

Lead length: 11 inch standard

## Outline Drawing



ONE PIECE RED LENS



TWO PIECE MOUNTING CLIP