

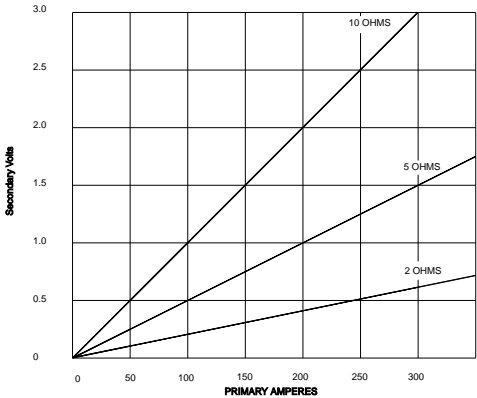
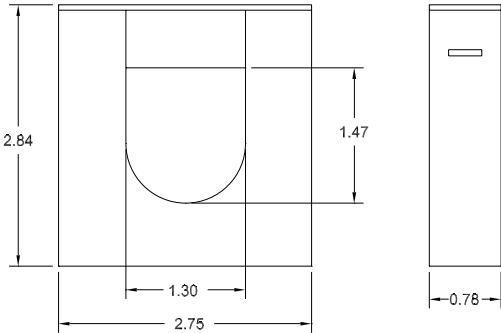
## 610-1000T



PART NUMBERS

<b>610-1000T</b> 1000 Turns
-----------------------------

OUTLINE DRAWING



The **610-1000T** Split Core Current Transformer is designed for assembly to an existing electrical installation without the need for dismantling the primary bus or cables. It incorporates a snap fit between the fixed and removable sections.

This transformer is intended for use with high input impedance devices that require signal voltages up to 5 VAC.

The output can be rectified and filtered for devices requiring DC input. The non-linearity and voltage drop of the rectifiers and filters must be considered in the choice of the loading impedance.

Application

For Energy Management Systems and Instrumentation Equipment having a High Input Impedance, eg. 14K ohms minimum

---

Frequency

50-400 Hz

---

Insulation Level

0.6 kV, BIL 10 kV full wave

---

Construction

The core and windings are encased in UL approved plastic

---

Continuous Thermal Current Rating Factor

330A at 30° C amb  
250A at 55° C amb

---

Flexible Leads

UL 1015 105° C, CSA approved, #18 AWG, 24" long unless otherwise specified

---

Approximate Weight

10 oz

---

Regulatory Agencies



Another HUNTINGTON ELECTRIC Company

CR Magnetics, Inc. 3500 Scarlet Oak Blvd. St. Louis MO USA 63122 V: 636-343-8518 F: 636-343-5119  
 Web: <http://www.crmagnetics.com>